

A truly astounding transformation of an American icon has occurred and is now available to any C6 Corvette owner. . .

The Bennett ZX1

Prototyped, developed, production tooled

& sold exclusively by Bennett Coachworks LLC.

This conversion is produced and installed by the renowned Bob Bennett and his team at Bennett Coachworks LLC, known for their award winning Concours d'Elegance restorations, unmistakable hot rods and customs, Industry establishing COBRA Replicas and "built to win" race cars.



A racing veteran himself, Bob is particularly proud of the total performance aspect of this new creation.

Designed for both high performance functionality and stunning visual excitement, the **ZX-1** is constructed to the most exacting standards in every respect.

Basic Conversion:

Built on your C6 donor, the base transformation includes; The body, prepared in fiberglass or carbon fiber by **Prototype Composites**, chosen for their work with Honda Performance Development, in their new state of the art 20,000 sq. ft. factory. They are an FAA certified, full 5S Lean manufacturing facility that specializes in the vacuum infusion process.

Proprietary LED lighting – rear taillights, front and rear side markers with front signal strips



All necessary electrical work is included

Show quality paint in your OEM Color using PPG Urethane paints

Drive line and basic interior design coming from your original car

However, if you seek to further enhance the experience and heighten the individuality, there is more...much more.



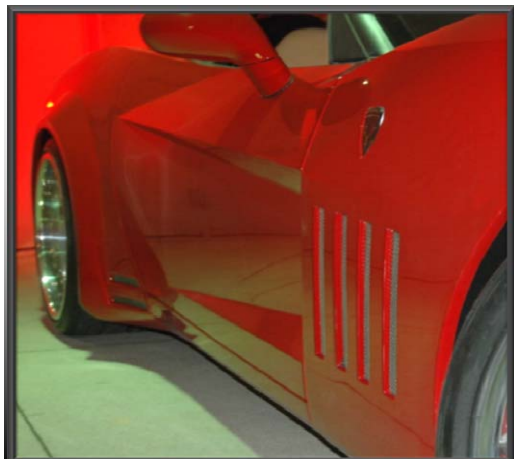
Stage Two: Performance and Appearance Options
Enhance the driving experience and further personalize
what is truly a singular variation on a theme

Short-Throw Shifter

Engineered to increase shift precision and substantially shorten the 6-speed shift. Flawless, firm shifts coupled with highly durable components will provide smooth transmission performance.

- 33% Shift Throw Reduction

- Spherical Pivot Bearing • Fully Isolated Upper Stick



HRE custom Alloy 18"/19" Wheel Package

You will need some **WIDE** wheels and **BIG** tires to fit our new widened body design. Among our favorites are the **HRE** wheels with **Nitto** Performance Tires. Other selections available, to choice.

Custom Paint Option

Your vehicle can be custom painted in any color you desire. Our expert painters will work with you to select the perfect color for your new vehicle.

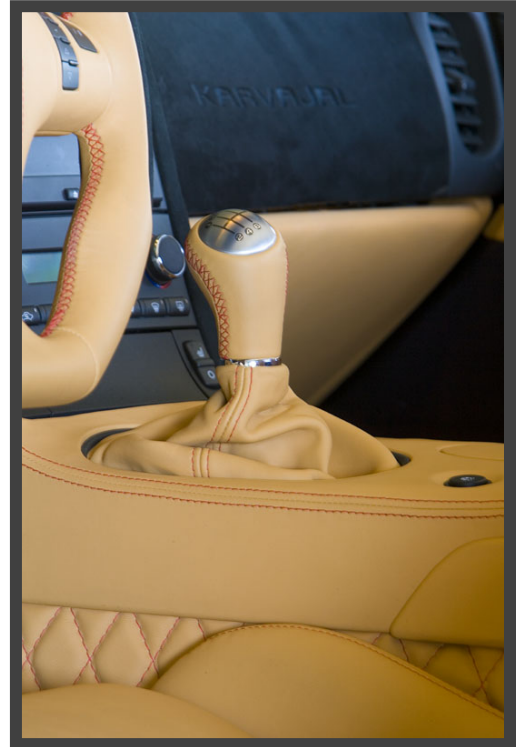


Custom Interior Package

Our expert leather craftsmen will create an interior as inviting and exciting as the exterior. Using only the finest selection of Italian leather and Alcantara suede, every detail will be transformed into a work of art.

Options Available, include;

- Customer selected leather colors, Alcantara suede and matching, complimentary or contrasting stitching.
- Custom D-shaped steering wheel, Shifter handle/knob and emergency boot, all leather wrapped to match interior trim colors.
- Custom Bennett Floor mats with saddle leather heel pad.
- Billet Aluminum Bennett Designs Sill plates.
- Full upper dash, pillars and rear head liner in Alcantara Suede.
- Transmission tunnel walls and interior doors wrapped with ZX-1 style diamond deluxe pattern.
- Stock C6 seats wrapped in matching leather with choice of stitching color.



Race Bucket Seat Option

Corbeau, Sparco, Recaro race seats are offered and can be custom leather wrapped and stitched by our expert leather craftsmen to match your interior.

Full Belly Pan & Custom Rear Air Diffusers

Custom Exhaust Tips

High Performance K&N Air Intake

Carbon Fiber Injector Rail Covers

And more . . .

Stage III



For the true performance enthusiast, we have prepared a select group of enhancements chosen specifically to respond to the design and development of this vehicle. A car that looks this incredible should move as good as it looks.

600+ BHP V8 supercharged C6 engine (2005-2007)

- Utilizing Eaton/Magnuson's Roots-style Supercharger with increased boost
- Liquid to Air Intercooler, integral to intake manifold base
- Procharger's Centrifugal-style supercharger may be swapped for the Magnuson installation if desired
- 2008+ model corvettes will generate +630BHP/510 lb-ft with the Supercharger setup



Pfadt Coil Over Adjustable Suspension & Front/Rear Adjustable Premium Sway Bars

One of the key advantages of our coil over kit is the flexibility with setting ride height. The shock bodies are fully threaded and thread into (or out of) the lower mounting cup giving you the ability to adjust the overall shock length by about 3 inches. It's no problem to maintain stock ride height or slam it nice and low. The important thing about changing ride height by using our threaded body is that you don't have to sacrifice shock travel to lower the car. Compared to the stock C6 Z06 leaf springs, our coil over spring assemblies are approximately 50% stiffer. Pfadt brand components are strong, lightweight and tested for dependability and durability. Our mounting cups are custom designed brushed aluminum for functionality and elite appearance. Pfadt coil springs are engineered, built, and tested not to take a set.



Brembo Brake ZX-1 Package

- Brembo Monoblock Billet Calipers
- Two 6 Piston Calipers, with 14" cross drilled/vented front rotors
- Two 4 Piston Calipers, with 13.6" cross drilled/vented rear rotors
- These are the throw you through the windshield, haul you down from space, Brakes



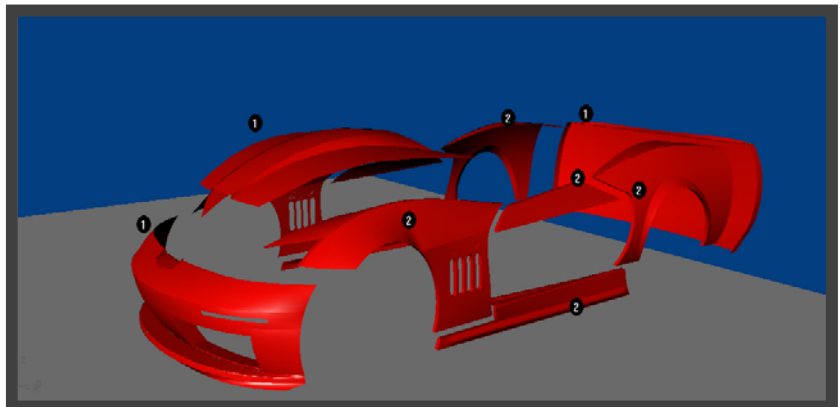
Long Tube Headers w/Cats & X Pipe

This high performance exhaust will take your ZX-1 to a whole new level. Constructed by hand, utilizing CNC cut exact-fit flanges, 1-7/8" tubes and 3" collectors. Named "Smooth Flow" as result of their construction having no sharp bends and very few welds, these headers are manufactured by the same folks that worked with GM to produce and supply the headers for the LS-1 engines in the ASA racing series. You will surely enjoy the added performance and aggressive sound from an already exhilarating ZX-1 exhaust system. Includes Random Tech Hi-Speed Cats and X-Pipe.



Premium Quality Carbon Fiber Race Panels are available for any stage

- Carbon Fiber body panels replace more than 80% of the exterior body
- Approximate 40% Body weight reduction
- Far superior strength to OEM
- Available as Clear Coat Directional Raw Weave finish



Every Car

- 1 year/12,000 mile warranty on any alterations related to the ZX-1 basic conversion.
- Authenticity documentation and interior build plaque for all cars
- All OEM heater options, air bags and power controls remain intact
- All transformations completed in less than one driving season
- GM RPO Z51 Performance Package recommended if Karvajal Suspension and Brake options are not selected.

About your Builder:

Bob Bennett and Bennett Coachworks LLC

Automotive Restoration, Custom Design, and Racing Construction

Beyond the extraordinary result of this transformation, in a conversion and modification of this magnitude, what is most important, is who is doing the work. It would be difficult to find anyone with a more thorough understanding and complete knowledge of the auto-enthusiast world than Bob Bennett.

Bob, and his firm, Bennett Coachworks LLC, have one of the most varied and esteemed resumes that you will ever find in the automotive industry. To mention just a very few of a very long list:

Bob did the restoration of the most rare, Ferrari "410 Super Fast" the "one off" darling of the 1956 Paris Auto Show, a car now worth millions. There are many other early, rare Ferraris to his credit. 250LM, 250GT Berlinetta Lusso, 250 PF Cabriolet, 275 GTB4, 365 GTB4 . . . the list goes on. There have been a string of Iso Grifos, including another Paris Auto Show car – the 1962 Iso prototype A3L as well as a 1 of 7 series 2 coupe, that he literally performed automotive archeology on to reconstruct the chassis. Lamborghinis, Maseratis . . . Add to these a myriad number of other High End Sports Cars, Hot Rods, Customs, Exotics, Pro-Street and Race Cars, COBRAs and of course, there have been countless numbers of Corvettes (Bob drives a prepped C5 Corvette as his "in-season" daily driver). And, he did the prototype and production work for the **ZX-1** . . .

Along the way, Bob was in-house research and development tech for the first COBRA "replica" company, Arntz Engineering, San Francisco, CA. Bob was the first person to ever show a COBRA Replica at the prestigious SAAC (Shelby American Automobile Club) Convention, with its introduction coming at the 1982 SAAC Convention in Dearborn, MI. He went on to prototype the Excalibur COBRA Replica, including building the Prototype, producing the tooling and fixtures and first 10 sets of steel, all single handedly. And, he was tapped by Concept Coach Builders, Milwaukee, WI, to be their Director of Operations for their Rolls Royce limousine series. Stretching Rolls Royce Silver Shadows and Silver Spurs. Building cars that surpassed Rolls Royce's factory Limousines.

As a driver, and a veteran of a variety of series and classifications, garnering track records and class championships, Bob Bennett has developed a unique understanding of power, performance and handling. This particular skill has given his firm a well deserved reputation for building winning race cars, with a particular strength in the Datsun "Z" car arena.

Bob and Bennett Coachworks LLC have been recognized for their work with hundreds of awards. They have visited the esteemed Pebble Beach Concours d'Elegance many times. Winning several Best of Class, The President's Award, Most Elegant Closed Coupe . . . and in a recent ***World of Wheels***, Hot Rod and Custom Auto Show, out of 6 entries, they took 5 firsts and a second, with this sole runner up coming to one of their own cars. He also won Best of Show, Radical, Handbuilt, Custom, 2 years in a row. Bennett Coachworks LLC does extensive prototype modeling for other automotive companies endeavors. They also do tub restorations for other Auto Restoration Firms, having won several Best of Shows and Senior Awards for those companies as well. To top it all off, Bennett Coachworks LLC has been awarded the Kit Car Magazine, "Builder's Award of Excellence".

In a career that spans over thirty eight years Bob Bennett and Bennett Coachworks LLC have played a major role in some of the most rare, most revered, most sought after and most exciting examples of automotive history.

From antiques, to hi-performance street cars, hot rods, exotics, and race cars built to win, if it's complex, difficult and needs to be perfect, Bob and Bennett Coachworks LLC has always risen to the challenge.

Who else would you want building ***YOUR*** car?

About the Manufacturer:

Michael Cudahy and Prototype Composites

Prototype Composites is a top tier manufacturer of carbon fiber, Kevlar and fiberglass products for the motorsports, outdoor sports, electric car, customizing, automotive aftermarket and aero space industries. Formally incorporated in 2006, a new business for new times, it actually had its beginning in 2000, when out of necessity, company founder Mike Cudahy needed to build a part that did not exist, for one of his race cars. With this act, Mike, a business man with an electrical engineering degree, found his passion as a model maker and machinist.

Prototype Composites hit the stage big, when they premiered a Lotus Exsige at the Vegas SEMA show, completely re-bodied in carbon fiber. One of only three in the world, the only one from America and the only one where the entire process was controlled by one facility. They did the same with a BMW M coupe. There have since been countless whole cars, parts and pieces added to their resume as well as custom, performance and development work for Honda racing, including their Indy car program. And beyond all this they serve our military with a number of combat strength industrial housings.

Today, Prototype Composites is a model shop, a molding facility, and a casting production operation. They occupy a state of the art 20,000 sq. ft. facility in Glendale WI., a near suburb of Milwaukee, WI. On the cutting edge of this cutting edge industry, they employ an FAA certified, full 5S Lean manufacturing, vacuum infused process, that is not only the envy of the industry, but their vendors as well, many of whom try to pry this engineering secret away, to no avail. Technology of this level demands the finest craftsmen's effort behind the master patterns and molds. Only this type of attention to detail produces castings that are not only beautiful, but repeatable.

As a manufacturer, Prototype Composites retains ultimate control over quality and delivery of every piece they make. In a world of "we're working on it", Prototype Composites prides itself on high quality workmanship in every piece that's always delivered on time. Prototype Composites is not a distributor of finished carbon fiber products from overseas. All pieces are made in-house, in America, with pride. From cocktail napkin to completion, if you want it perfect and on deadline, it's what they do.

Bennett Coachworks LLC and **Prototype Composites** have collaborated on many projects . . . a track proven, winning team. Ready to build you, a singular expression of style and speed . . . the **ZX-1 Corvette**.

For sales and further information, Contact:

Bob Bennett
Bennett Coachworks LLC
1500 N. 4th Street
Milwaukee, Wisconsin 53212
414.298.2068
projects@hotrobuilders.com email
www.hotrobuilders.com web site



Radical from every angle . . .





Nothing looks quite like it



Take it home . . .